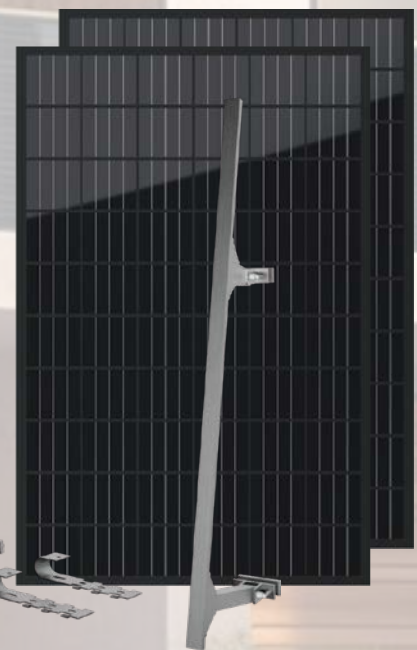
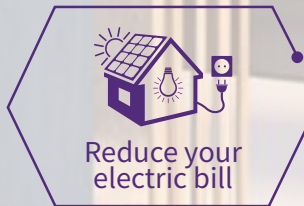


# Solar Kits VSK

## VaySunic Solar Kits

VaySunic launched VSK series Solar On-Grid Kits for residential PV systems. It is a “Plug-and-play design” composed of solar panel, microinverter and bracket, which can be installed by yourself.

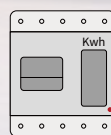
This portable “All-in-one solution” helps reduce transportation and installation costs. Also, these relatively inexpensive kits can save you significant amounts of investment on your energy bill.



**Power Cord**  
Plug and play cable

**Junction Box**  
Breaker and Energy Meter

**Accessory**  
Mounting fittings



# Residential On-Grid PV Kits

# VSK SERIES

SYSTEM SIZE	1 in 1			2 in 1		
PRODUCT MODEL	VSK-350W	VSK-400W	VSK-450W	VSK-600W	VSK-800W	VSK-1000W
PV System Size Nominal(Wp)	350W	400W	450W	600W	800W	1000W
<b>PV MODULE SPECIFICATION</b>						
Panel Model	Topcon					
Power(W)	425-445W					
Vmp(V)	31.34-32.13					
Voc(V)	37.83-38.65					
Isc(A)	13.98-14.28					
Imp(A)	13.56-13.85					
Dimensions(L x W x H)(mm)	1762mm*1134mm*30mm					
PV module weight(kg)	20.50					
PV System Color	Silver or Full Black					
Certifications	IEC ISO TUV CE					
<b>MICROINVERTER SPECIFICATIONS</b>						
Inverter Size(w)	350	400	450	600	800	1000
Max DC Power(W)	380	430	490	650	870	1080
Max DC Voltage(V)	65					
MPPT Voltage range(V)	33-48			33-48		
No.of MPPT'S	1			2		
Max AC Power(VA)	350	400	450	600	800	1000
Max Output Current(A)	1.52	1.74	1.96	2.60	3.48	4.50
AC Nom.Voltage/Voltage Range(V)	230/180 ~ 275					
AC Grid Freque ncy range(Hz)	50/45 - 55					
Number of phases	1					
Dimensions(L x W x H)(mm)	300 x 126 x 32			361 x 222 x 36		
Inverter weight(kg)	1.75			3.2		
Compliance	IEC/EN 62109-1,IEC/EN 62109-2,IEC/EN 61000-6-1/-2/-3/-4,EN50549-1: 2019,VDE-AR-N 4105: 2018,CEI0-21					
* 12/240VUL inverters also available upon request						
<b>SYSTEM LAYOUT</b>						
# of Modules	1			2		
# of inverters				1		
# of inputs	1			2		
PV Layout options	Landscape or Portrait					
PV Array Surface Area(m <sup>2</sup> )	2			4		
PV Array Weight(kg)	21			42		
<b>PRODUCTION ESTIMATES(KWh)</b>						
*Projected yearly output at 1100GHI/year	720	822	925	1235	1647	2059
*Projected yearly output at 1460GHI/year	956	1091	1228	1640	2186	2733
*Projected yearly output at 1825GHI/year	1195	1363	1535	2050	2733	3417
*Based on 0.85% system derating(formula=DC Power x peak sunshine hour/year x derate factor)(GHI=Global horizontal irradiance)						
<b>SYSTEM OPTIONS</b>						
Wifi Monitor	Wifi or Sub-1G					
Battery Bank	Optional					
<b>Mounting System Types</b>						
Weight(kg)	7.5kg					
Dimensions(L x W x H)(mm)	1050*880*33mm					
Frame	Anodized Aluminum Alloy					