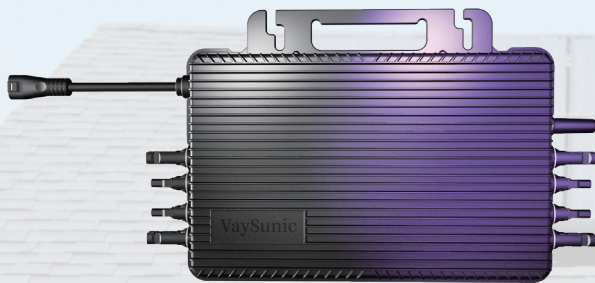
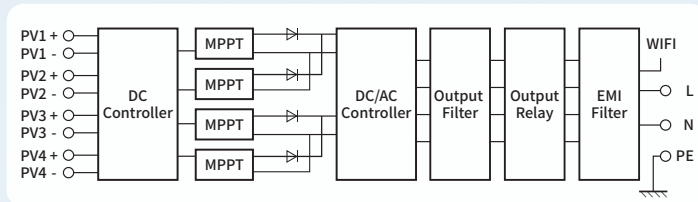


SolarCore Series

VM2000 2100 2250W-P4



HIGHER YIELDS

60°C full power operation
Great performance in low sunlight



SAFETY&RELIABILITY

RSD Compliance
IP67



FLEXIBLE INSTALLATION

4-in-1 design enables faster installation
and comes with a lower cost



FOUR INDEPENDENT MPPT

Independent MPPT ensures greater
energy harvest, resulting in higher returns



STRONG COMMUNICATION

Encrypted WiFi Solution for
Residential & Commercial

Model	VM2000W-P4	VM2100W-P4	VM2250W-P4
Input Data (DC)			
Commonly Module Power (W)	400 to 670W+	400 to 670W+	400 to 700W+
Operation Voltage Range (V)		14-61V	
MPPT Voltage Range (V) ¹		20-60V	
Start-up Voltage (V)		18V	
Max. Input Voltage (V)		61V	
Max. Input Current (A)		4x18A	
Max. Input Short Circuit Current (A)		4x25A	
DC Portbackfeed Current (A)		0	
Overvoltage Class DC Port		II	
Number of MPPTs		4	
Number of Inputs per MPPT		1	
Output Data (AC)			
Rated Output Power (VA)	2000VA	2100VA	2250VA
Rated Output Current (A)	8.8A	9.2A	9.8A
Max. Units per 4mm ² Branch ²		4	
Max. Units per 2.5mm ² Branch ²		3	
Nominal Output Voltage (V) ³		220, 230, 240 / 185~253V	
Nominal Frequency (Hz)		50 / 60Hz	
Max. Output Overcurrent Protection (A)		13.9A	
Max. Output Fault Current (A)		13.9A	
Current Inrush (A)		0	
Overvoltage Class AC Port		III	
Power Factor (adjustable)		>0.99 (default)	
Total Harmonic Distortion		<3%	
Efficiency			
CEC Peak Efficiency	96.60%	96.60%	96.50%
Nominal MPPT Efficiency		99.80%	
Nighttime Power Consumption (mW)		<50	
Packing Configuration			
Container		20'GP / 40'HQ	
Pieces/Pallet		980 * 1110 * 120mm	
Pallets per Container		20 / 48	
Pieces per Container		2208 / 4608	
General Data			
Ambient Temperature Range (°C)		-40 to +65°C	
Dimensions (W x H x D mm)		347 × 260 × 36.5mm (Metal Housing)	
Weight (kg)		5.1kg	
Zero Injection		Supported (Optional)	
Enclosure Rating		Outdoor IP67 (NEMA 6)	
Relative Humidity		0 ~ 100%, No Condensing	
Max. Operation Altitude (m)		2000m	
Pollution Degree		III	
Cooling		Natural Convection (no fans)	
Communication		WIFI	
Monitoring		VIP Cloud ⁴	
Type of Isolation		Galvanically Isolated	
Compliance	EN/IEC62109-1/2, EN/IEC61000-6-1/-2/-3/-4, EN/IEC62311:2020, EN50665:2017, EN50549-1:2019, EN50549-10:2022, EN300328, EN301489-1/-17, ABNT NBR16149:2013, ABNT NBR16150:2013, ABNT NBR IEC62116:2012, IEC62891:2020, IEC61727:2004, IEC62116:2014		

*1 The output power may vary with the output voltage.

*2 Refer to local requirements for exact number of microinverters per branch.

*3 Nominal voltage/frequency can vary depending on local requirements.

*4 VaySonic Monitoring System.